

Instructions for the application of Sole Mates™ Therapeutic Pads.

Sole Mate Therapeutic Hoof Pads are intended for temporary use only and should not be left on for extended periods of time. (72 hours max)

Apply pads at the first sign of acute laminitis and call your veterinarian immediately.

In such cases always follow the recommendations of your veterinarian.

Horse shoes should be removed before the application of these pads.

When using pads for rehabilitation, pads should only be applied for use during exercise (walking in hand) and turn-out. Pads can cause retention of excessive moisture if left on for longer periods of time. Excessive moisture can lead to softening of the sole and an increase in hoof infections.

You will need a roll of duct tape for applying the pads and a sharp blade or shears for cutting the pads to shape.

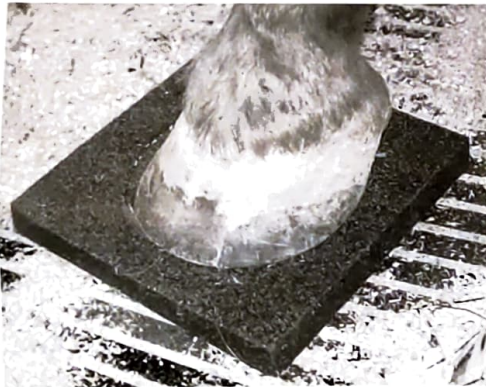
Place the hoof on pad with the sealed side down.

Wait three minutes for the hoof to make an impression.

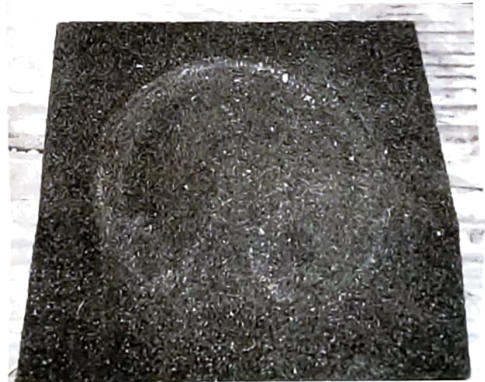
Trim the pad leaving about 1/4" wider.

Place tape on pad as shown and apply to the hoof. Add tape as needed to hold pad.

Step 1



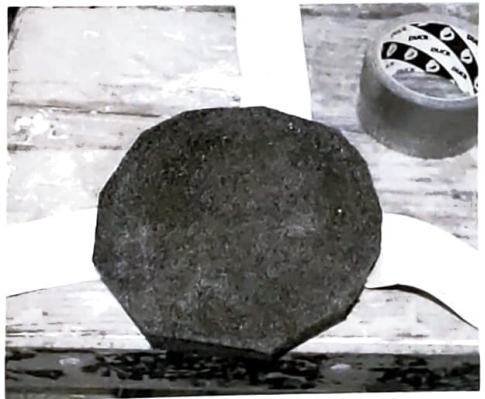
Step 2



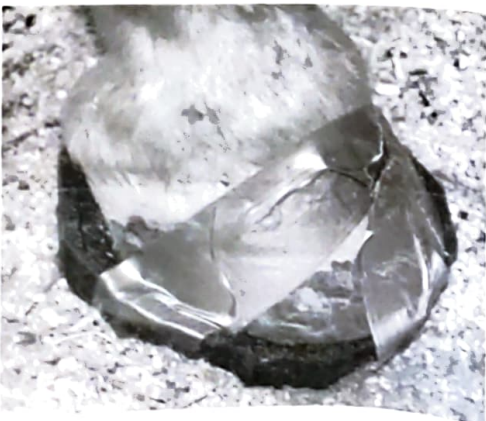
Step 3



Step 4



Step 5



Step 6

